

TWINTEC S3 Block Salt Softener Specification



MODEL SELECTION

Below is a chart which shows the maximum hardness for each model at a flow of 20 l/min. Higher flow rates will reduce the softeners capacity. Reduce the capacity by 5% for every 10 l/min flow above 20 l/min.

Gear Setting	Min setting	Normal setting	Max setting
520	545	610	640
600	440	515	545
800	350	400	420
920	300	340	365
1040	265	305	315
1220	220	255	270
1700	160	185	195
1900	140	165	175
2020	130	155	165

* Hardness leakage is likely if water hardness exceeds 500mg/l

TWINTEC S3 Block Salt Softener Specification

CONNECTIONS

- inlet : 3/4" bsp male parallel
- outlet : 3/4" bsp male parallel
- overflow : 1/2" hose connector
- drain : 3/8" outside diameter tubing

OPERATING CONDITIONS

- maximum operating water pressure : 8 bar
- minimum operating water pressure : 1 bar (with water flowing)
- maximum operating water temperature : 20°C
- minimum operating water temperature : protect from freezing

SOFTENER DETAILS

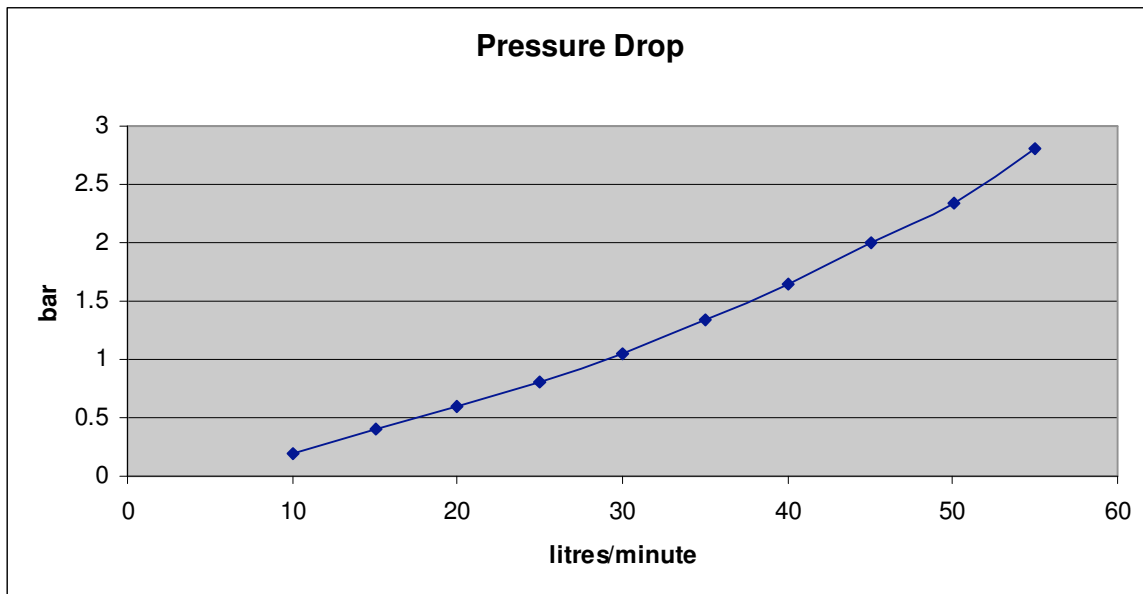
- salt storage : 2 x 4 kg Harvey's blocks
- operating weight : 32.5kg
- shipping weight : 20kg

OVERALL DIMENSIONS

- height : 490 mm
- depth : 440 mm
- width : 205 mm

OPERATING DATA

- salt used per regeneration : 250/350 g
- maximum flow : 55 l/min
- minimum flow : < 5 l/hour
- regeneration water volume : 17 litres
- approx flow rate to drain : 1.5 l/min



The above information was correct at the time of print but Softener Supplies reserves the right to alter any of the above data without notice.